



20 3

20 4 25

<http://www.tokai-lease.co.jp/>

( )  
( )

TEL ( )

20 6 27  
20 6 30

20 6 30

20 3 19 4 1 20 3 31

20 3 19 3	12,889 2.4 13,210 3.7	681 3.8 708 18.7	598 5.5 567 2.9	542 28.0 754 3.9

	1	1		
20 3 19 3	16.94 25.65	23.96	3.6 5.3	2.2 2.0
	20 3		19 3	

				1
20 3 19 3	26,630 27,675	16,227 15,448	58.1 52.9	443.92 472.75
	20 3 15,459	19 3 14,654		

20 3 19 3	1,500 1,304	643 1,082	1,474 11	2,095 2,710

	1				
19 3 20 3	3.00 3.00	5.00 5.00	8.00 8.00	244 269	31.2 47.2
21 3 ( )	5.00	5.00	10.00		52.8

21 3 20 4 1 21 3 31

					1
	6,550 3.3 13,400 4.0	390 11.4 800 17.4	360 9.3 730 22.0	310 7.3 660 21.6	8.90 18.95

1

	20 3	34,943,225	19 3	31,100,529
	20 3	117,398	19 3	102,980
			23	1

1

20 3	19 4 1	20 3 31		
------	--------	---------	--	--

20 3	11,916 2.4	602 13.3	610 21.2	568 14.1
19 3	12,212 4.3	531 36.0	503 32.4	661 4.0

	1	1
20 3	17.73	
19 3	22.51	21.03

2

				1
20 3	24,448	15,183	62.1	435.99
19 3	25,064	14,385	57.4	464.10

20 3      15,183                      19 3      14,385

21 3                      20 4 1                      21 3 31

					1
	6,100 4.4	320 9.4	310 9.1	290 5.1	8.33
	12,500 4.9	650 7.9	680 11.5	640 12.6	18.38

1

34,825,827



20

6

40

( 20 3 31 )	3,660 1,138	13,101	97.6	12,889	97.6	3,872 (1,306)	2,566

( )

/			



( )

( )

	17 3	18 3	19 3	20 3

×

18

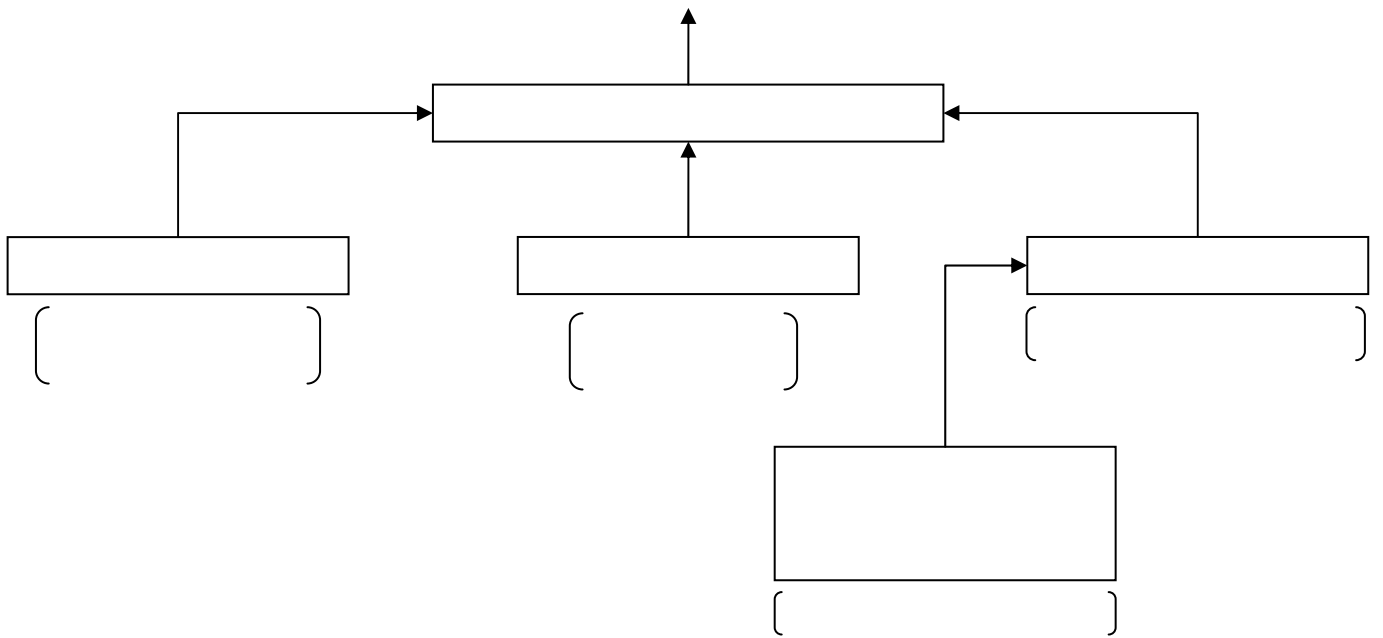
18 5 17

URL

<http://www.tokai-lease.co.jp/>

<http://www.tse.or.jp/listing/compsearch/index.html>

( )



17 3

%




1  
3

3

2  
3

_____	_____	_____	_____
5			
3			
3			
_____	_____	_____	_____
3			
_____	_____	_____	_____
_____	_____	_____	_____
_____	_____	_____	_____
_____	_____	_____	_____
_____	_____	_____	_____
_____	_____	_____	_____
_____	_____	_____	_____
_____	_____	_____	_____

			%		%		%	
		13,210	100.0	12,889	100.0	320	2.4	
		9,988	75.6	9,577	74.3	411	4.1	
1 2		3,221	24.4	3,312	25.7	91	2.8	
		2,513	19.0	2,631	20.4	118	4.7	
		708	5.4	681	5.3	27	3.8	
		36	0.3	51	0.4	15	41.8	
		4	0.0	11	0.1	6	( 136.6)	
		9	0.1	10	0.1	0	( 8.6)	
		2	0.0	2	0.0	0	( 16.1)	
		6	0.0	8	0.1	1	( 27.8)	
		11	0.2	18	0.1	6	( 51.5)	
		177	1.4	133	1.1	43	24.5	
		142	1.1	109	0.9	32	( 22.9)	
		35	0.3	24	0.2	10	( 30.9)	
	3		567	4.3	598	4.6	31	5.5
			230	1.7	198	1.5	31	13.8
			155	1.2	145	1.1	9	( 6.2)
		1	0.0	3	0.0	1	( 116.7)	
		73	0.5			73	( )	
				49	0.4	49	( )	
		18	0.1	243	1.8	224	1,205.5	
4	9	0.1	6	0.0	2	( 28.7)		
5		0	0.0			0	( )	
		9	0.0	2	0.0	6	( 75.6)	
				234	1.8	234	( )	
		778	5.9	553	4.3	225	28.9	
		96	0.7	66	0.5	30	31.8	
( )		79	0.6	40	0.3	39	49.4	
		6	0.1	15	0.1	22	129.3	
	754	5.7	542	4.2	211	28.0		

18 4 1 19 3 31

18 3 31	7,432	5,211	865	13	13,496
	300	300			600
			259		259
			1		1
			754		754
				5	5
			8		8
			0		0
	300	300	501	5	1,095
19 3 31	7,732	5,511	1,366	19	14,591

18 3 31	305	149	155	794	14,446
					600
					259
					1
					754
					5
					8
					0
	179	85	93	0	93
	179	85	93	0	1,002
19 3 31	125	63	62	794	15,448

19 4 1 20 3 31

19 3 31	7,732	5,511	1,366	19	14,591
	300	300			600
			250		250
			542		542
				3	3
	300	300	292	3	889
20 3 31	8,032	5,811	1,659	22	15,481

19 3 31	125	63	62	794	15,448
					600
					250
					542
					3
	119	35	83	27	111
	119	35	83	27	778
20 3 31	6	27	21	767	16,227

	( )	
	( )	






( )

<p>( )</p>	<p>_____</p>
<p>( 18 8 11 19 )</p>	
<p>( )</p>	<p>_____</p>
<p>17 12 9</p>	
<p>9</p>	
<p>17 12</p>	
<p>14,654</p>	
<p>( )</p>	<p>_____</p>
<p>17 11 29</p>	
<p>40</p>	
<p>_____</p>	<p>(</p>
	<p>19 4 13 ( 42 )</p>
	<p>17 234</p>
	<p>17 252</p>

<hr/>	<hr/>
<hr/>	<hr/>
	<hr/>

--	--

18 4 1

19 3 31

	28, 448, 320	2, 652, 209		31, 100, 529
--	--------------	-------------	--	--------------

2, 652, 209

	81, 624	21, 356		102, 980
--	---------	---------	--	----------

21, 356

19 4 1

20 3 31

	31, 100, 529	3, 842, 696		34, 943, 225
--	--------------	-------------	--	--------------

3, 842, 696

	102, 980	14, 418		117, 398
--	----------	---------	--	----------

14, 418

19 6 28		154	5	19 3 31	19 6 29
19 10 26		95	3	19 9 30	19 12 10

20 6 27			174	5	20 3 31	20 6 30

<hr/> <p style="text-align: right;">=====</p> <p>1</p> <hr/>	<hr/> <p style="text-align: right;">=====</p>
<p>2</p> <p style="text-align: right;">18 10 31</p> <hr/> <hr/> <hr/>	<hr/>

	9			20		


472.75	443.92
25.65	16.94
23.96	

	15,448	16,227
	14,654	15,459
	794	767
( )	31,100,529	34,943,225
( )	102,980	117,398
( )	30,997,549	34,845,827

	754	542
	0	
	0	
	754	542
	29,400,451	32,046,995
	2,067,532	

_____	_____	_____	_____
_____ _____	_____ _____	_____ _____	_____ _____
_____	_____	_____	_____
_____	_____	_____	_____
_____	_____	_____	_____





		12,212	100.0	11,916	100.0	295	2.4
(	)	( 10,457 )	( 85.6 )	( 10,141 )	( 85.1 )	( 315 )	( 3.0 )
(	)	( 1,755 )	( 14.4 )	( 1,774 )	( 14.9 )	( 19 )	( 1.1 )
		9,650	79.0	9,215	77.3	435	4.5
(	)	( 8,261 )	( 67.6 )	( 7,884 )	( 66.2 )	( 377 )	( 4.6 )
(	)	( 1,389 )	( 11.4 )	( 1,330 )	( 11.1 )	( 58 )	( 4.2 )
		2,561	21.0	2,701	22.7	139	5.5
	1	2,029	16.6	2,098	17.6	68	3.4
		531	4.4	602	5.1	70	13.3
		146	1.2	144	1.2	1	1.3
(	)	( 7 )	( 0.1 )	( 14 )	( 0.1 )	( 7 )	( 94.3 )
(	)	( 60 )	( 0.5 )	( 46 )	( 0.4 )	( 14 )	( 23.7 )
(	)	( 63 )	( 0.5 )	( 63 )	( 0.5 )	( 0 )	( 0.1 )
(	)	( 14 )	( 0.1 )	( 19 )	( 0.2 )	( 5 )	( 36.5 )
		174	1.5	136	1.2	37	21.7
(	)	( 69 )	( 0.6 )	( 70 )	( 0.6 )	( 0 )	( 0.5 )
(	)	( 47 )	( 0.4 )	( 21 )	( 0.2 )	( 25 )	( 53.9 )
(	)	( 11 )	( 0.1 )	( 7 )	( 0.1 )	( 4 )	( 37.4 )
(	)	( 26 )	( 0.2 )	( 24 )	( 0.2 )	( 1 )	( 6.4 )
(	)	( 19 )	( 0.2 )	( 12 )	( 0.1 )	( 6 )	( 34.6 )
		503	4.1	610	5.1	106	21.2
		156	1.3	148	1.3	8	5.1
(	)	( 155 )	( 1.3 )	( 145 )	( 1.3 )	( 9 )	( 6.2 )
(	)	( 1 )	( 0.0 )	( 3 )	( 0.0 )	( 1 )	( 116.7 )
		4	0.0	203	1.7	198	4853.6
(	)	( 4 )	( 0.0 )	( 2 )	( 0.0 )	( 1 )	( 41.3 )
(	)	( )	( )	( 2 )	( 0.0 )	( 2 )	( )
(	)	( )	( )	( 198 )	( 1.7 )	( 198 )	( )
		655	5.4	555	4.7	100	15.3
		39	0.3	37	0.3	2	5.1
		45	0.3	49	0.4	4	10.1
		661	5.4	568	4.8	93	14.1

18 4 1 19 3 31

18 3 31	7,432	2,228	2,982	5,211
	300	300		300
	300	300		300
19 3 31	7,732	2,528	2,982	5,511

18 3 31	376	41	217	636	13	13,266
						600
		41	41			
			259	259		259
			661	661		661
					5	5
		41	444	402	5	997
19 3 31	376		662	1,038	19	14,263

18 3 31	300	300	13,567
			600
			259
			661
			5
	178	178	178
	178	178	818
19 3 31	121	121	14,385

19 4 1 20 3 31

19 3 31	7,732	2,528	2,982	5,511
	300	300		300
	300	300		300
20 3 31	8,032	2,828	2,982	5,811

19 3 31	376	662	1,038	19	14,263
					600
		250	250		250
		568	568		568
				3	3
		318	318	3	915
20 3 31	376	980	1,356	22	15,178

19 3 31	121	121	14,385
			600
			250
			568
			3
	116	116	116
	116	116	798
20 3 31	4	4	15,183

...

...

...

( )

( )	<hr/>
( 18 11 19 )	<hr/>
( )	<hr/>
( 17 12 )	<hr/>
( 17 12 )	<hr/>
14,385	<hr/>
( )	<hr/>
( 17 11 29 )	<hr/>
30	<hr/>
<hr/>	<hr/>
	(
	19 4 13
	42
	14
	198
	14
	213




18 4 1

19 3 31

	81,624	21,356		102,980

21,356

19 4 1

20 3 31

	102,980	14,418		117,398

14,418




464.10	435.99
22.51	17.73
21.03	

1

	14,385	15,183
	14,385	15,183
	31,100,529	34,943,225
	102,980	117,398
	30,997,549	34,825,827

1

1

	661	568
	661	568
	29,400,451	32,046,995
	661	
	2,071,517	